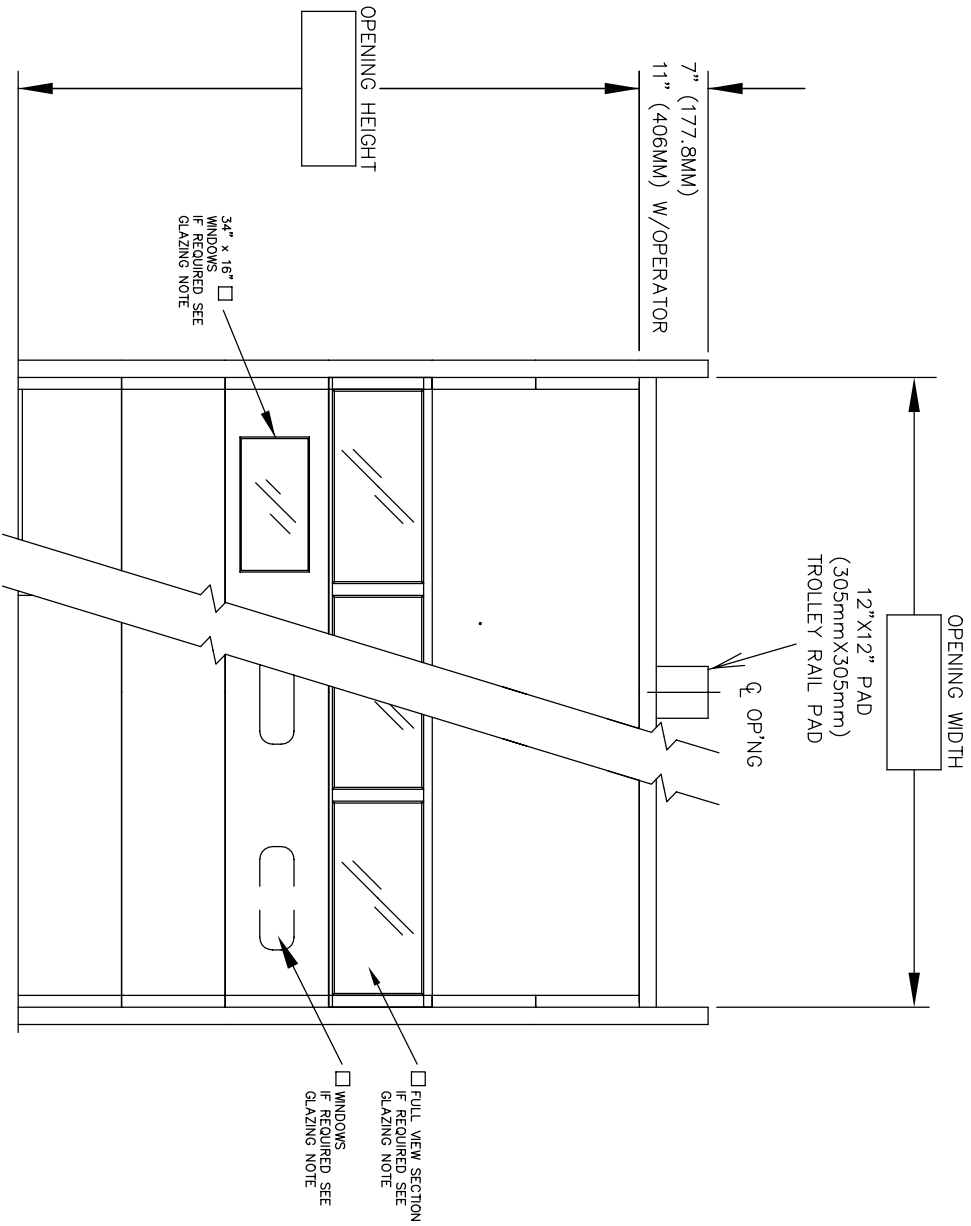


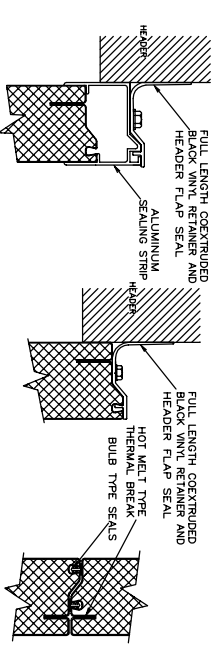
DOOR NUMBER	QTY	OPENING		ACTUAL		MODEL	JAMB MOUNTING			LOOK	PANELS		SECTION NUMBER OPEN FOR GLASS																																							
		WIDTH	HEIGHT	WIDTH	HEIGHT		W	S	M		ANGLE	B	R	HT	1	2	3	4	5	6	7	8																														

THERMASEAL STANDARD



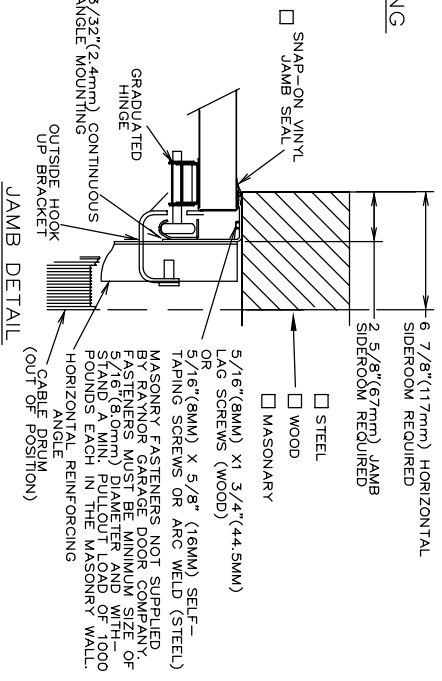
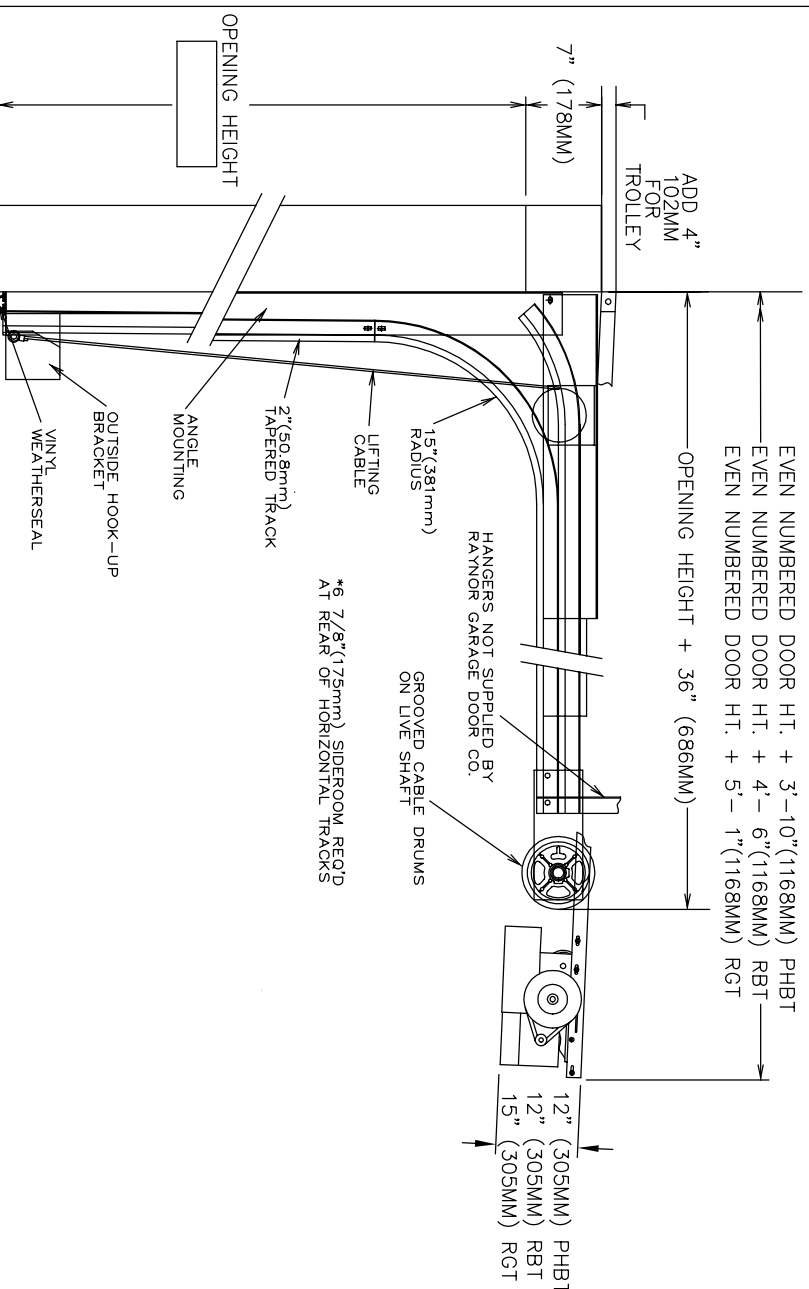
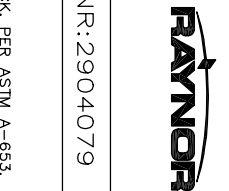
JOB:	
CONTR:	
ARCH:	NR: 2904079

- DOORS SHALL BE THERMASEAL SECTIONAL OVERHEAD TYPE RAYNOR SERIES STANDARD AS MANUFACTURED BY RAYNOR GARAGE DOOR CO. SECTIONS SHALL BE 1 3/4" (44.5mm) THICK, ROLL-FORMED FROM COMMERCIAL QUALITY HOT DIPPED GALVANIZED STEEL PER ASTM-924 AND A-653, DOOR SECTIONS CONSTRUCTED OF 25 GAUGE EXTERIOR AND 26 GAUGE INTERIOR STUCCO-EMBEDDED BEVUOL EXTERIORS NOT MELT BEAD BOUND AN EFFECTIVE PERMANENT CORE OF EXTERIOR AND INTERIOR SKINS TO BE SEPERATED BREAK JOINT SEALS ARE USED TO COMPLETE A WEATHER-TITE SEAL ALONG THE ENTIRE SECTION JOINTS. END STILES TO BE 16 GAUGE. WHEN TESTED IN ACCORDANCE WITH ASTM-C-518, THERMASEAL HAS THE FOLLOWING ENERGY VALUES: R-VALUE = 16.4 AND U-VALUE = .067. FINISH TO BE TOBACCO/INTERIOR OF DOOR SKINS PRE-COATED PRIOR TO ROLLFORMING WITH A TWO COAT PROCESS OF BAKED ON POLYESTER FINISH OVER EPOXY PRIMER (WHITE OR DARK KYNAR BROWN) EXTERIOR AND WHITE INTERIOR.
- FULL VIEW SECTIONS - SECTIONS SHALL BE MADE FROM 6063T5 EXTRUDED ALUMINIUM STILE AND RAIL CONSTRUCTION GLASS ENCASED AND HELD IN PLACE WITH SELF-ALIGNING RIGID VINYL GLAZING RETAINER. FINISH-TO MATCH DOOR SECTIONS. GLAZING TO BE 1/2" DSB INSULATED OR 1/8" DSB GLASS.
- GLAZING (AS SHOWN) - 2 1/4" (61.0MM)X8" (203MM)X 1/8" 3/16" GLAZING (AS SHOWN) - 3 1/4" (86.3MM)X16" (406.4MM)X 1" INSULATED DSB GLASS.
- LOOKING - CREMONE TYPE BOLT ENGAGES SLOT IN TRACK, HAND SIDE. FIVE PIN TUMBLER CYLINDER OUTSIDE - NIGHT LATCH INSIDE.
- LOOKING - SPRING LOADED SLIDE BOLT ENGAGES SLOT IN TRACK. OPERABLE FROM INSIDE ONLY - MAY BE MOUNTED EITHER SIDE
- LOOKING - OMIT LOCK.
- LOCKS SHOULD NOT BE SUPPLIED WITH AN ELECTRIC OPERATED DOOR WITHOUT A LOCK INTERLOCK SWITCH.



DOOR NUMBER	QTY	OPENING		ACTUAL		MODEL	JAMB	MOUNTING	LOCK	PANELS	PANELS	SECTION NUMBER OPEN FOR GLASS																											
		WIDTH	HEIGHT	WIDTH	HEIGHT							W	S	M	ANGLE	PKBKT	HIGH	WIDE	1	2	3	4	5	6	7	8													

JOB:	
DISTR:	
CONTR:	
ARCH:	NR:2904079



TRACKS- 2" (50.8mm) HOT-DIPPED GALVANIZED TRACK PER ASTM A-653, TRAPEZOIDAL PROFILE AND SHALL BE REINFORCED WITH CONTINUOUS ANGLE.
 HARDWARE- HINGES AND BRACKETS MADE FROM GALVANIZED STEEL. TRACK ROLLERS SHALL HAVE TEN 1/4" (6.4mm) DIAMETER HARDENED STEEL BALLS PER ROLLER.
 SPRING COUNTERBALANCE- HEAVY DUTY OIL-TEMPERED WIRE TORSION SPRINGS ON A CONTINUOUS BALL BEARING CROSS-HEADER SHAFT GALVANIZED AIRCRAFT TYPE LIFTING CABLES WITH MIN. SAFETY FACTOR OF 5 TO 1.

ANSII/UL325 REQUIRES THE MOTOR OPERATOR BE MOUNTED A MINIMUM OF 8' ABOVE THE FLOOR OR GUARDING OF THE MOTOR OPERATOR TO PREVENT INJURY.(GUARDS BY OTHERS).

- RAYNOR POWERHOIST BASIC (PHBT) 1/2 H.P., 115 VOLT, SINGLE PHASE
- RAYNOR POWERHOIST STANDARD (RBT) ____ H.P., ____ VOLT, ____ PHASE
- RAYNOR POWERHOIST OPTIMA (RGT) ____ H.P., ____ VOLT, ____ PHASE
- WIRING TYPE-SR2 WIRING, MOMENTARY CONTACT OPEN/CLOSE/STOP, SAFETY EDGE TO REVERSE.
- WIRING TYPE-SPECIAL (NOT AVAILABLE WITH PHBT OPERATORS)
- SPECIFY SPECIAL WIRING TYPE _____
- PNEUMATIC SAFETY EDGE TO REVERSE COIL OR
- ELECTRIC SAFETY EDGE TO REVERSE CABLE TAKE UP REEL
- THRU-BEAM PHOTO EYES