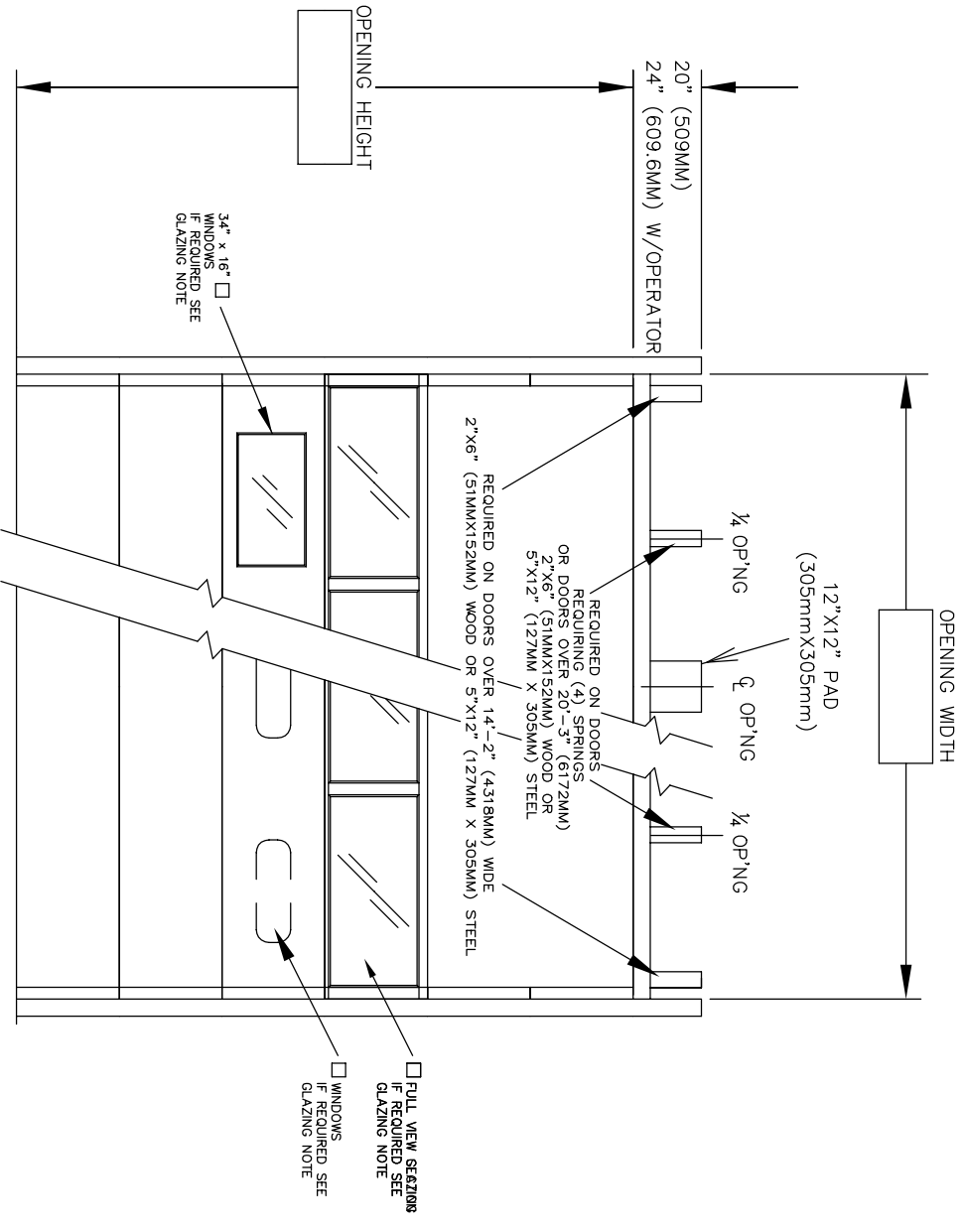


DOOR NUMBER	QTY	OPENING		ACTUAL		MODEL	JAMB	MOUNTING	LOOK	PANELS	PANELS	SECTION NUMBER OPEN FOR GLASS																																
		WIDTH	HEIGHT	WIDTH	HEIGHT							W	S	M	ANGLE	B	R	T	1	2	3	4	5	6	7	8																		

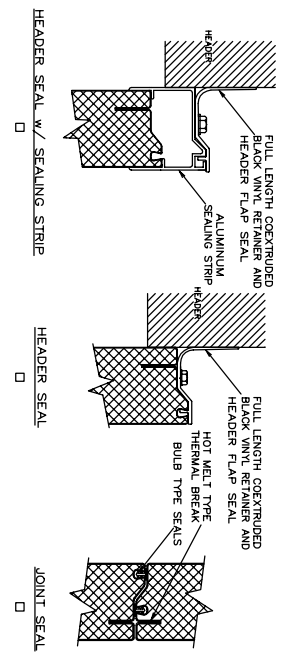
INTERIOR ELEVATION

# THERMASEAL STANDARD



JOB:	<b>RAYNOR</b>
CONTR:	
NR: 2904080	

- 1) DOORS SHALL BE THERMASEAL SECTIONAL OVERHEAD TYPE RAYNOR SERIES STANDARD, AS MANUFACTURED BY RAYNOR GARAGE DOOR CO.. SECTIONS SHALL BE 1 3/4" (44.5mm) THICK, ROLL-FORMED FROM COMMERCIAL QUALITY HOT DIPPED GALVANIZED STEEL PER ASTM-924 AND A-653. DOOR SECTIONS CONSTRUCTED OF 25 GAUGE EXTERIOR, AND 26 GAUGE INTERIOR. STUCCO-EMBEDDED BEVDED EXTRUDED HOT MOLT SEAL BOUFD AN EFFECTIVE PERMANENT CORE OF EXTERIOR AND INTERIOR SKINS TO BE SEPERATED BREAK JOINT SEALS ARE USED TO COMPLETE A WEATHER-TITE SEAL. ALONG THE ENTIRE SECTION JOINTS, END STILES, TO BE 16 GAUGE. WHEN TESTED IN ACCORDANCE WITH ASTM C-518, THERMASEAL HAS THE FOLLOWING ENERGY VALUES: R-VALUE = 16.4 AND U-VALUE = .061. FINISH - INTERIOR OF DOOR SKINS PRE-COATED PRIOR TO ROLL FORMING WITH A TWO COAT PROCESS OF BAKED ON POLYESTER FINISH OVER EPOXY PRIMER. (WHITE OR DARK KYNAR BROWN) EXTERIOR AND WHITE INTERIOR.
- FULLVIEW SECTIONS - SECTIONS SHALL BE MADE FROM 6063T5 EXTRUDED ALUMINIUM STILE AND RAIL CONSTRUCTION GLASS ENCASED AND HELD IN PLACE WITH SELF-ALIGNING RIGID VINYL GLAZING RETAINER.
  - FINISH-TO MATCH DOOR SECTIONS. GLAZING TO BE \_\_\_ 1/2" DSB INSULATED OR \_\_\_ 1/8" DSB GLASS.
  - GLAZING (AS SHOWN) - 24" (610MM)x8"(203MM)x \_\_\_ (1/8", 3/16", 1/4", 5/8") RUBBER BY RAYNOR
  - GLAZING (AS SHOWN) - 34" (863.6MM)x16"(406.4MM)x 1" INSULATED DSB GLASS
  - LOCKING - CREMONE TYPE BOLT ENGAGES SLOT IN TRACK, \_\_\_ HAND SIDE. FIVE PIN TUMBLER CYLINDER OUTSIDE - NIGHT LATCH INSIDE.
  - LOCKING - SPRING LOADED SLIDE BOLT ENGAGES SLOT IN TRACK. OPERABLE FROM INSIDE ONLY - MAY BE MOUNTED EITHER SIDE
  - LOCKING - OMIT LOCK.
  - LOCKS SHOULD NOT BE SUPPLIED WITH AN ELECTRIC OPERATED DOOR WITHOUT A LOCK INTERLOCK SWITCH.

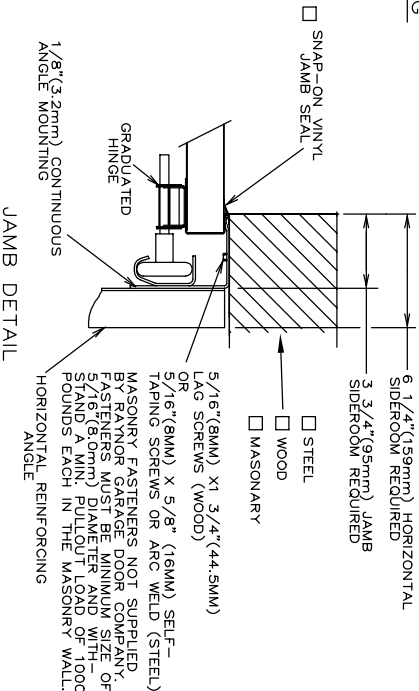
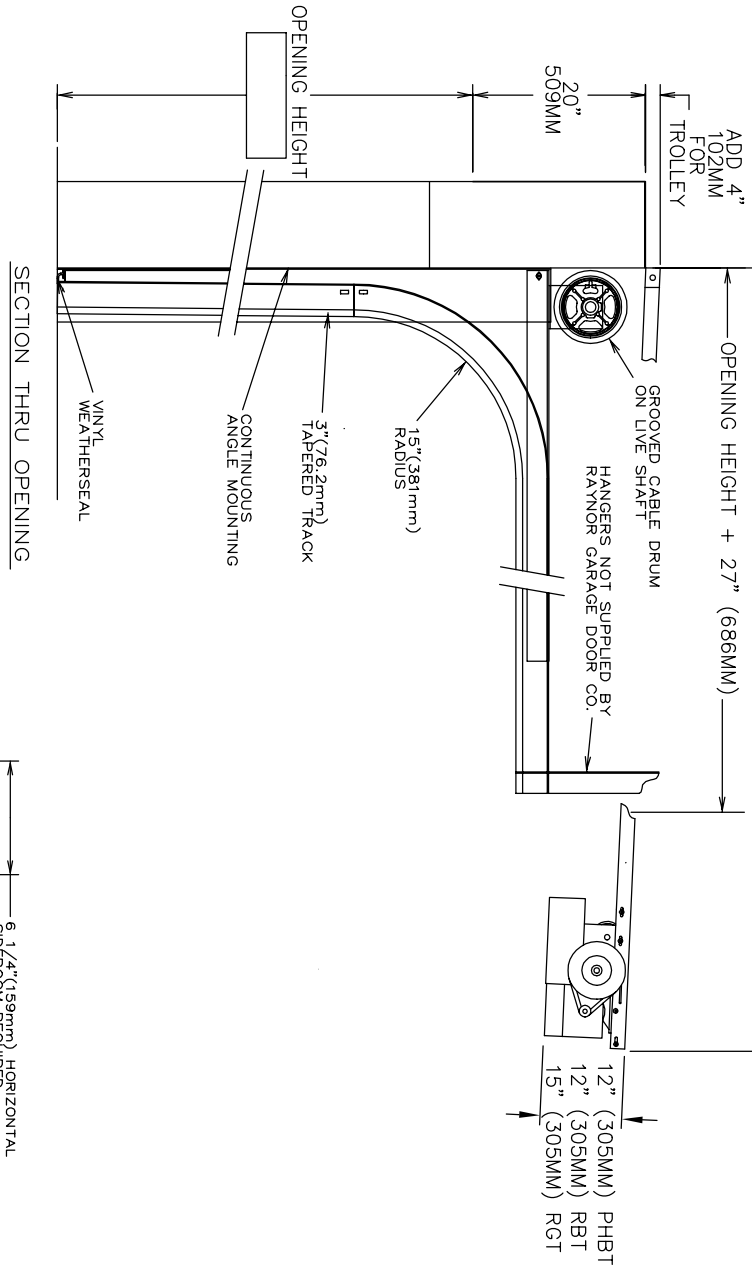


HEADER SEAL w/ SEALING STRIP  HEADER SEAL  JOINT SEAL

DOOR NUMBER	QTY	OPENING		ACTUAL		MODEL	JAMB		MOUNTING	LOCK	PANELS		SECTION NUMBER	OPEN FOR GLASS																																		
		WIDTH	HEIGHT	WIDTH	HEIGHT		W	M			ANGLE	PBKT			WIDE	HIGH	1	2	3	4	5	6	7	8																								

JOB:  
 DISTR:  
 CONTR:  
 ARCH:  
 NR:2904080

EVEN NUMBERED DOOR HT. + 3'-10" (1168MM) PHBT  
 EVEN NUMBERED DOOR HT. + 4'-6" (1168MM) RBT  
 ODD NUMBERED DOOR HT. + 5'-1" (1168MM) RGT



ANSI/UL325 REQUIRES THE MOTOR OPERATOR BE MOUNTED A MINIMUM OF 8' ABOVE THE FLOOR OR GUARDING OF THE MOTOR OPERATOR TO PREVENT INJURY. (GUARDS BY OTHERS).

- RAYNOR POWERHOIST BASIC (PHBT) 1/2 H.P., 115 VOLT, SINGLE PHASE
- RAYNOR POWERHOIST STANDARD (RBT) \_\_\_\_ H.P., \_\_\_\_ VOLT, \_\_\_\_ PHASE
- RAYNOR POWERHOIST OPTIMA (RGT) \_\_\_\_ H.P., \_\_\_\_ VOLT, \_\_\_\_ PHASE
- WIRING TYPE—SR2 WIRING, MOMENTARY CONTACT OPEN/CLOSE/STOP, SAFETY EDGE TO REVERSE.
- WIRING TYPE—SPECIAL (NOT AVAILABLE WITH PHBT OPERATORS) SPECIFY SPECIAL WIRING TYPE \_\_\_\_\_
- PNEUMATIC SAFETY EDGE TO REVERSE  COIL OR
- ELECTRIC SAFETY EDGE TO REVERSE  CABLE TAKE UP REEL
- THRU-BEAM PHOTO EYES